



苏州汉森电梯有限公司 HANSON LIFT (SUZHOU) CO.,LTD.

地址:中国·江苏常熟东南开发区顺祥路98号
Add: 98 Shunxiang Road, Changshu Southeast Development
Zone, Changshu City, Jiangsu Province, China
电话(Tel): +86-512-52300585
传真(Fax): +86-512-52906839
邮编(P.C.):215500
Http://www.hansonlift.com

此样本提供的各参数与特性仅供参考, 汉森保留随时更改产品设计和说明的权利, 如有更改, 恕不另行通知。
All the information in this catalogue is only for reference. Hanson Elevator reserves the right to alter product design
and specification. Specifications subject to change without notice.

2015年8月印刷

公共交通型自动扶梯 PUBLIC TRAFFIC TYPE ESCALATOR



扫描二维码
关注汉森电梯门户网站

苏州汉森电梯有限公司
HANSON LIFT (SUZHOU) CO.,LTD.



公司简介

Brief introduction about the company

苏州汉森电梯有限公司是一家引进英国汉森电梯有限公司的品牌和先进技术的电梯企业。公司坚持在引进中不断创新，不断提升技术含量，努力实现与世界先进技术同步发展，立志为客户提供可信赖的多元化的产品。

汉森电梯以市场为导向，以创新为动力，以品质为根本，以服务为保证，做到引进与开发并重，走再创新的发展道路。工厂占地面积逾33500多平方米，其中生产厂区面积达20000多平方米，先进的电梯试验塔高达100米。公司汇聚了从事电梯研究多年的高水平、高素质技术人才和管理人才，始终贯彻以顾客为中心的营销理念，不断建立和完善以销售、安装、维保“三位一体”的市场营销运作体制和服务体系，以先进的制造工艺、加工设备，专业的技术支持，确保产品的质量。

汉森电梯面向国际国内市场，努力实现企业管理与国际接轨，朝着生产节能、少污染、低噪音、长寿命、绿色环保电梯方向发展，为全球用户提供质量完美的电梯产品。

Hanson Lift (Suzhou) Co., Ltd. We introduced brand and technology from Hanson Lift (UK) Co., Ltd. We keep innovating and improving, we exert ourselves to make progress and provide reliable multiple products and services.

Hanson stresses on keep introducing and developing which based on market orientation and quality and services and driven by innovation, our plant occupied a floor of 33500 square meters including a 20000 square meters workshop and a 100 meters testing tower, we have many experts in researching and administration. We insist on customer focused principles and improve sales, installation, services system. We use advanced manufacture and equipments and professional support to make sure of high quality of products.

Hanson faces to international and domestic market, strives to realize enterprise management and connection with international market, develops towards green and environmental friendly elevator with energy conservation, low pollution, low noise, and long service life, we provide elevator products with superior quality for global users.

强载运输， 为城市交通奉献一己之力

Powerful loading transportation
Contributing to urban communication



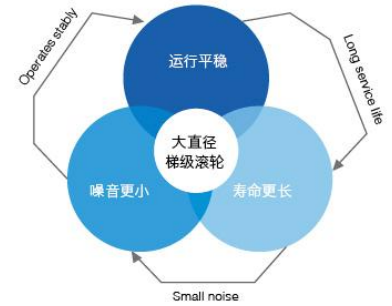
钢铁先锋，坚固耐用

- 桁架全部采用角钢，结构独特强度高，防腐处理彻底，效果好，寿命长。
- 整机采用模块化设计，结构紧凑，通用性强。
- 先进的国际制造工艺及总装工装，保证了梯路的精准。
- 大直径的梯级滚轮，运行平稳，噪音更小，寿命更长。

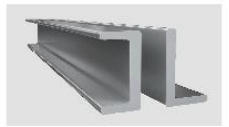


汉森公共交通型系列自动扶梯拥有安全可靠、运行宁静、低碳环保等多重优势，以科学合理的结构设计，完美融入于车站、机场等人流量集中的公共场所，为乘客营造舒适快捷的交通出行环境。

Hanson public transportation series of escalator possesses many advantages like safety, reliability, silent operation, low carbon and environmental protection, integrating perfectly into public places with concentrated visitor flow rate like stations and airport with scientific and reasonable structure design, creating comfortable and convenient traffic environment for passengers.



高强度桁架
Truss with high strength



全角钢型材
Angle iron proximate matter;

Steel pioneer, sturdy and durable

- Truss adopts angle iron with unique structure with high strength, thorough antiseptic treatment, excellent effect and long service life.
- The overall design is concise and smooth and compatible.
- Advanced international craftsmanship ensures the accuracy of step running.
- The large size diameter of step roller with stable running, low noise and long service life.

安全至上，人性设计 让每一次出行安全到达

Safety comes first, humanistic design
Make each travel safe



CPU主板电脑控制
Be controlled by CPU main board



高精度梯路侧向导轨
High precision guiderail



人性化的扶手入口
Humanistic handrail entrance

人性设计，安全第一

- 超强的CPU主板电脑控制，实时监控运行状况，发现异常及时自动停梯，即时自动记录并显示故障代码。
- 独一无二的单侧定位高精度U型导轨配上质感十足优质护板，细节中处处透露安全理念。
- 高精度梯路侧向导轨系统保证梯级与裙板间保持最小的间隙，降低了裙板与梯级间隙异物夹入的危险。
- 人性化的扶手入口保护并加装围裙板刷，更加安全可靠。



四位一体，全方位的安全方案
Quaternary, comprehensive energy-saving scheme.

Humanistic design, safety comes first

- Powerful CPU main board can monitor the running operation in real time and stop escalator automatically when something abnormal happened, it can automatic record and display the fault code.
- Unique unilateral U guiderail with high precision mates with superior skirt panel revealing safety philosophy in the detail.
- High precision guiderail system assures the minimum clearance between steps and skirt panel, reduces the danger resulted from foreign materials come into clearance.
- Humanistic handrail entrance is secured by brush.



节能理念，环保先锋 使每一次运行高效节能

Energy saving idea, environmental protection pioneer
Make each travel highly efficient and energy saving

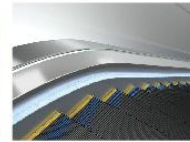


节能低耗，稳定运载

- 优越的变频控制技术，在空载情况下，自动扶梯可低速运行甚至停止运行；当检测到乘客接近时即恢复正常速度运行，节能效果可以达到60%以上。
- PLC控制自动加油润滑系统，实现了扶梯在运行过程中给传动链理想的自动润滑，延长传动机构的使用寿命。
- 滚轮外置于专门设计的滚轴梯级链，大大节省现场维护保养时间。



PLC控制自动加油
Automatic lubrication controlled by PLC



LED照明
LED illumination



滚轴梯级链
Roller step chain

优越的变频控制技术 Superior frequency control technology



Energy conservation and low consumption, stable running

- Excellent frequency converting control technology, escalator can automatically run in low speed or even stop running under no-load state, when passenger approaching, it returns to normal speed, energy-saving effect is above 60%.
- PLC automatic oil lubricating control system: fulfill the ideal automatic lubricating for driving chains in the process of escalator running and prolong the service life of driving mechanism.
- The roller is placed outsider specially designed to step chain, effectively save site maintenance time.

公共交通型扶梯，步步为赢， 为城市公共交通系统提供完美解决方案

Public traffic escalator, step by step to win
Provide perfect solution for urban public traffic system

汉森公共交通型自动扶梯以灵动的外观设计融合完善的功能配置，采用新型耐用材料，在空间规划上实现与建筑的完美融合，其耐用性能，运行性能，能完全满足地铁、天桥、车站、机场等公共场所的交通需求，为打造符合城市的便捷公共交通系统提供完美解决方案。

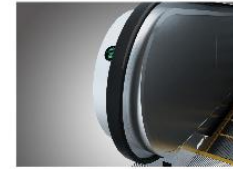
Hanson public traffic escalator integrates perfect functional configuration with flexible appearance design, adopts novel durable materials, and realizes perfect integration with building in spatial planning. Its durable and operational performance can completely satisfy traffic needs of public places like subway, overline bridge, station, and airports, provide perfect solution for creating city's convenient public system.

美学设计，人性关怀

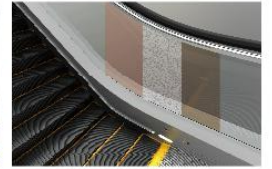
直扶手、斜扶手的造型选择，配合多种扶手带颜色和护壁板颜色，打造多样化个性需求。

Aesthetic design, humanistic care

Vertical balustrade and inclined balustrade with multiple colors of handrail and balustrade can be choice, satisfy the diversified demand.



斜扶手
Inclined balustrade



玻璃直扶手
tempered glass vertical balustrade

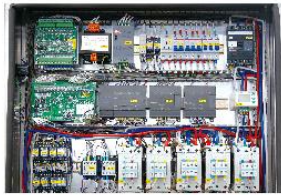


重载公共交通型扶梯，四平八稳，强大的运载能力，领先的安全保障

Heavy load public traffic escalator, very steady
Strong carrying capacity, the leader of safety control

汉森重载型公共交通系列自动扶梯是一款专为公共交通量身定制的重载型自动扶梯，其优越的运行性能、强大的运载能力和领先的安全保障，能够充分满足人流量极大、运输时间较长的承载要求，为地铁、车站、机场等公共交通运输场所提供最佳解决方案。

Hanson heavy load public traffic series of escalator is customized for public traffic. Its outstanding operation performance and powerful carrying capacity as well as leading safety guarantee can satisfy demand for great passenger flow, long transportation time, provide optimal solution for public traffic places like subway, station and airports.



变频控制
Frequency converting control

变频控制

变频控制和星三角转化双重模式，保障重载交通型自动扶梯能够持续稳定运行。

Frequency converting control

Dual pattern with frequency converting control and star/delta start control guarantees stable operation of heavy load escalator.



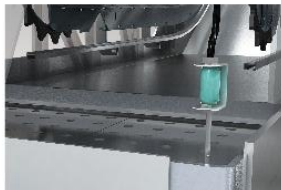
扶手端部驱动
Handrail terminal drive

扶手端部驱动

扶手端部驱动方式，采用二级传动、V型扶手带和回转轮的紧密配合，达到减少扶手带摩擦系数，从而降低能耗。

Handrail terminal drive

The handrail terminal drive mode adopts second level of transmission, and closes coordination between V-belt and friction wheel to reduce handrail friction coefficient and realize energy saving



下机房安装水位检测感应器（室外梯）
Water level detector is installed in lower machine room (outdoor escalator)

下机房安装水位检测感应器（室外梯）

下机房安装水位检测感应器（室外梯）能够自动检测水位情况，及时发现积水问题。

Water level detector is installed in lower machine room (outdoor escalator)

This water level detection sensor can automatically detect water level and find out ponding problem.



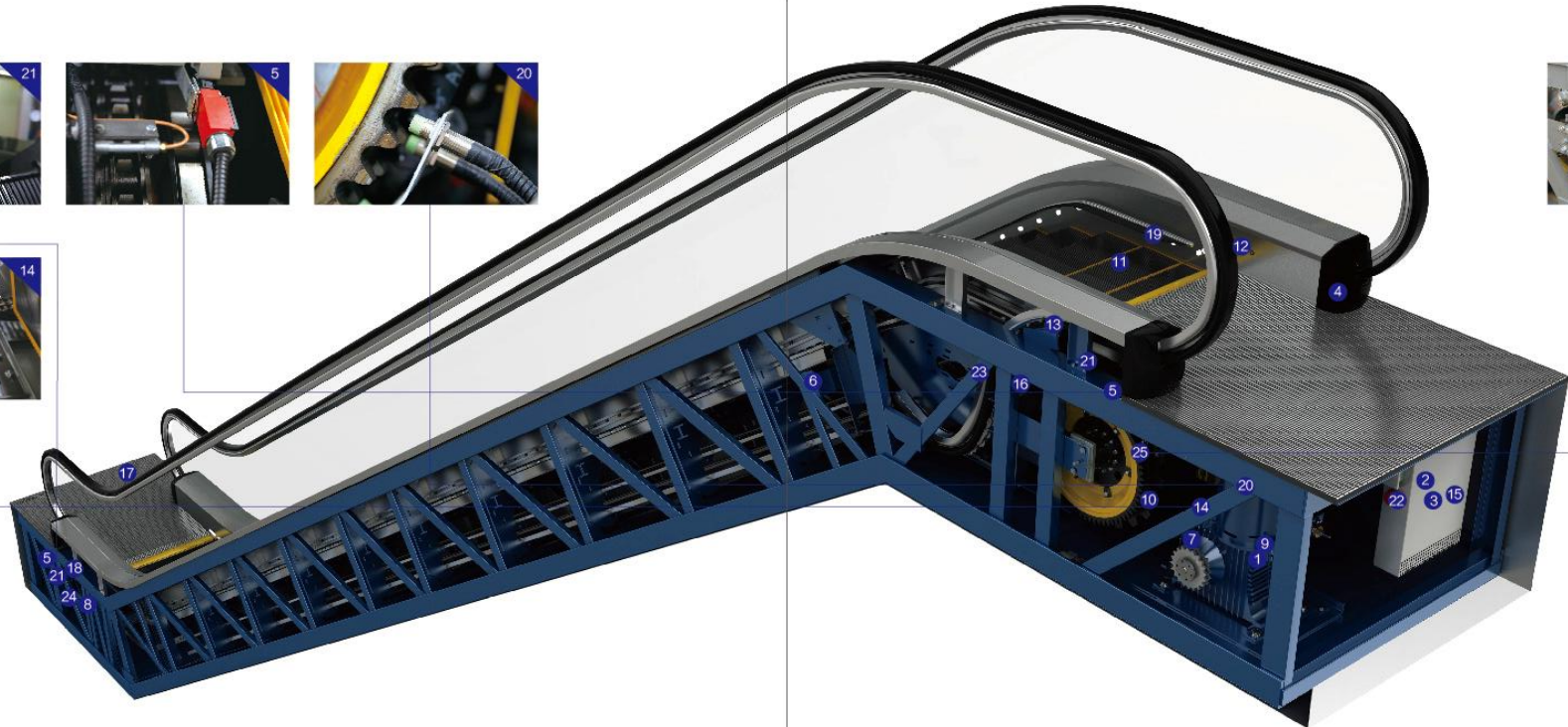
安全装置

Safety device

标准安全装置	Standard Safety Device
1 缺相、错相保护	Lack of Phase, Error Phase Protection
2 马达超载保护	Motor Over-load Protection
3 电器回路保护	Electrical Appliance Loop Protection
4 扶手带入口保护	Handrail Entrance Protection
5 梳齿板安全保护装置	Comb Plate Safety Device
6 梯级塌陷保护装置	Step Sagging Protection Device
7 驱动链断裂保护	Broken Drive-chain Safety Device
8 梯级链断裂保护	Broken Step Chain Protection
9 超速保护	Over-speed Protection
10 非操作逆转保护	Direction Reversal Protection
11 警戒线	Security Line
12 紧急停止按钮	Emergency Stop Button
13 围裙板保护	Skirt Panel Protection
14 制动器保护	Brake Protection

标准安全装置	Standard Safety Device
15 检修安全开关	Safety Inspection Switch
16 梯级照明	Step Illumination
17 前沿板打开保护装置	Landing Plate Contact
18 扶手带速度监控	Handrail Speed Monitor
19 围裙板刷	Skirt Panel Brush
20 制动距离检测	Braking Distance Inspection
21 梯级缺失监测装置	Step Missing Detection

可选用的安全装置	Optional Safety Device
22 启动警铃装置	Alarm Bell Starting Device
23 断带保护	Handrail Broken Protection
24 下部机房水位检测 (室外梯)	Lower Machine Room Water Level Detection (Outdoor Escalator)
25 附加制动器 (H>6m时必须配备)	Auxiliary Brake (It Should be Allocated with the Emergency Brake when H>6m)



精致的工艺、独特的设计

Exquisite technology, unique design

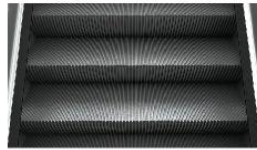


注：图片系电脑绘制，可能与实际略有不同，以实物为准。
Note: Pictures have been drawn by computer. It might be slightly different from actual colors. Please take real product as criterion.

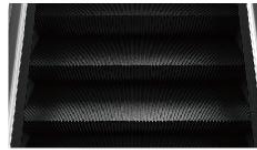
梯级 Step



黑色不锈钢（室内梯标配）
Black Stainless Steel (Standard for Indoor Escalator)



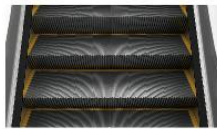
银灰色铝合金（室外梯标配）
Silver Grey Aluminum Alloy (Standard for Outdoor Escalator)



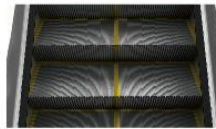
黑色铝合金（选配）
Black Aluminum Alloy (Optional)



边框喷涂C型（选配）
Frame Spraying C-Type (Optional)



边框黄色塑料C型（选配）
Frame Yellow Plastic C-Type (Optional)

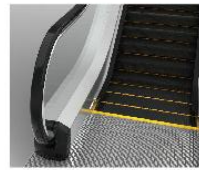


边框喷涂E型（选配）
Frame Spraying E-Type (Optional)

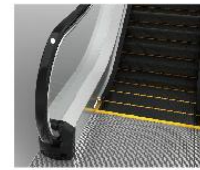


边框黄色塑料E型（选配）
Frame Yellow Plastic E-Type (Optional)

扶手带颜色 Handrail Color



黑色
Black



黑色带点白
Black with a little white



红色
Red



蓝色
Blue



绿色
Green



褐色
Bronze



浅褐色
Light brown

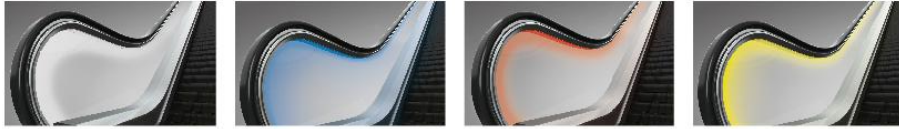


灰色
Gray

精致的工艺、独特的设计

Exquisite technology, unique design

扶手照明 Handrail illumination



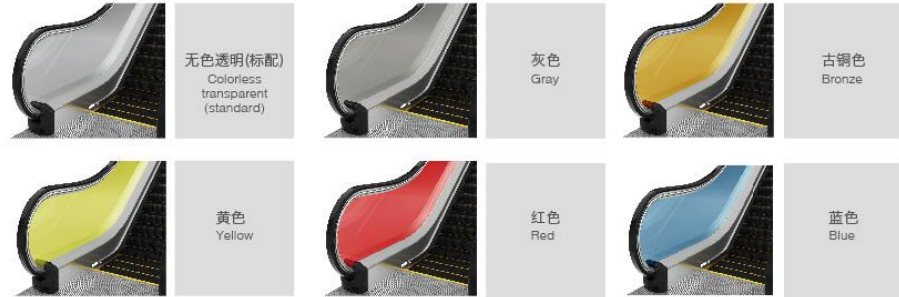
白色 (选配)
White (Optional)

蓝色 (选配)
Blue (Optional)

红色 (选配)
Red (Optional)

黄色 (选配)
Yellow (Optional)

护壁板颜色 Balustrade color



无色透明(标配)
Colorless transparent
(standard)

灰色
Gray

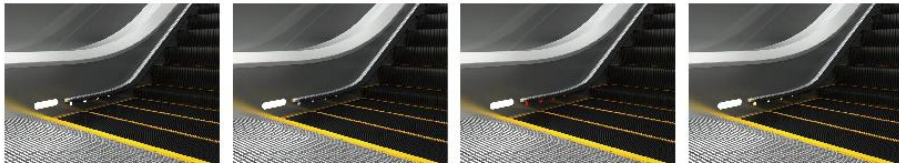
古铜色
Bronze

黄色
Yellow

红色
Red

蓝色
Blue

围裙照明 Skirt panel illumination



白色 (选配)
White (Optional)

蓝色 (选配)
Blue (Optional)

红色 (选配)
Red (Optional)

黄色 (选配)
Yellow (Optional)

注：图片系电脑绘制，可能与实际略有不同，以实物为准。

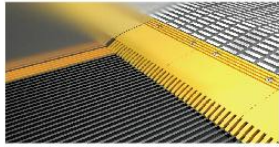
Note: Pictures have been drawn by computer. It might be slightly different from actual colors. Please take real product as criterion.



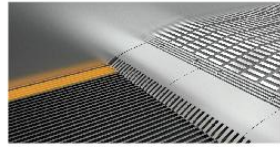
精致的工艺、独特的设计

Exquisite technology, unique design

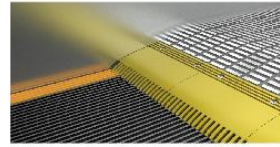
梳齿 Comb



黄色塑料 (标配)
Yellow Plastic (Standard)



铝 (选配)
Aluminum (Optional)

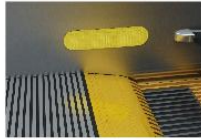


铝表面黄色喷漆 (选配)
Aluminum Surface Yellow Paint (Optional)

梳齿照明 Comb Lighting



白色LED (选配)
White LED (Optional)



黄色LED (选配)
Yellow LED (Optional)

注：图片系电脑绘制，可能与实际略有不同，以实物为准。

Note: Pictures have been drawn by computer. It might be slightly different from actual colors. Please take real product as criterion.

光控立柱 Post beam



不锈钢光控立柱 (选配)
Stainless steel post beam (optional)



铝合金光控立柱 (选配)
Aluminum post beam (optional)

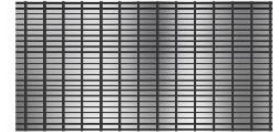
前沿板 Floor plate



整梯铝合金 (选配)
Whole aluminum (Optional)



不锈钢条纹贴片 (选配)
Stainless Steel Striped Patch (Optional)

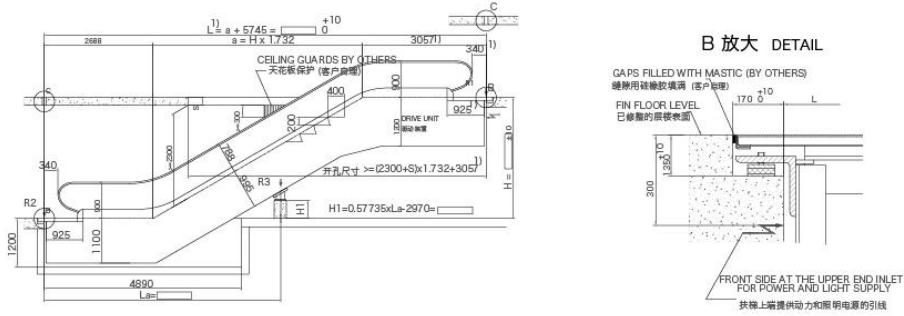


不锈钢方块贴片 (选配)
Stainless Steel Square Patch (Optional)



HS200-30M中高度公交型自动扶梯土建图

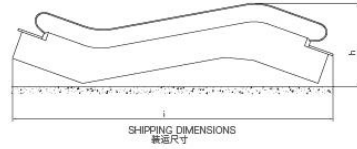
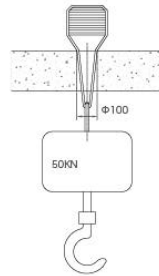
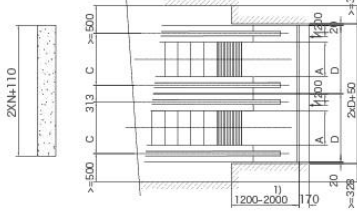
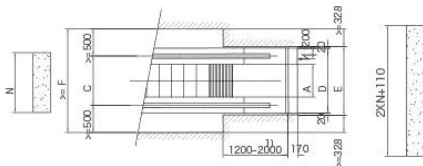
Construction layout drawing of HS200-30M medium height heavy duty escalator



单台布置 SINGLE

并联布置 PARALLEL

C 放大 DETAIL

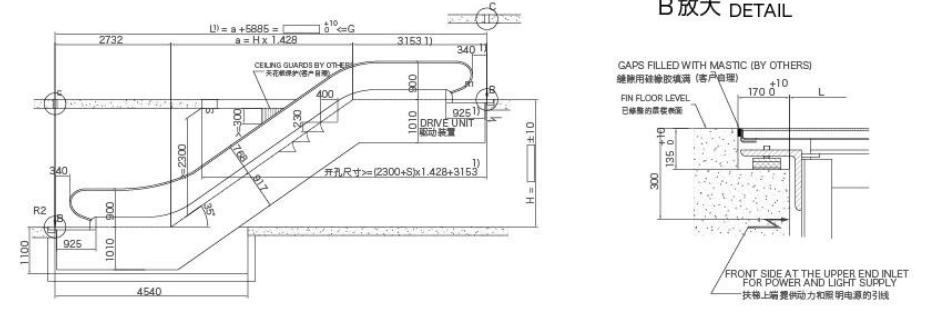


型号 Type	提升高度 Rise	重量 Weight	电机功率 Power kw
30-60M 3240 man/hour	H	KN	V=0.5m/s
	6000	93	8
	6500	96	
	7000	100	
	7500	103	
	8000	107	11
	8500	110	
	9000	113	
	9500	117	15
	10000	120	
11000	127		
12000	134		
30-80M 4800 man/hour	6000	96	11
	6500	100	
	7000	103	
	7500	107	
	8000	111	15
	8500	115	
	9000	118	
	9500	122	2 x 11
	10000	126	
	11000	143	
12000	150		
30-100M 6000 man/hour	6000	101	15
	6500	105	
	7000	109	
	7500	113	
	8000	126	2 x 11
	8500	130	
	9000	134	
	9500	138	2 x 15
	10000	142	
	11000	150	
12000	158		

尺寸单位为mm, 个别尺寸可能有所修改/mm size units, individual size may be revise

HS200-35M中高度公交型自动扶梯土建图

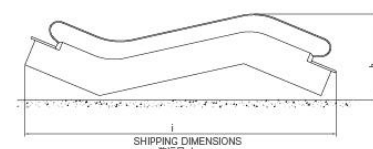
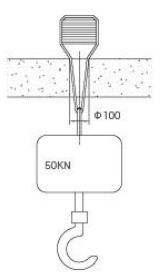
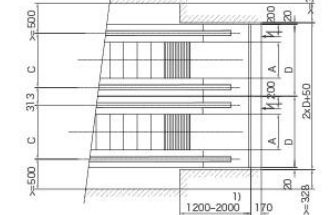
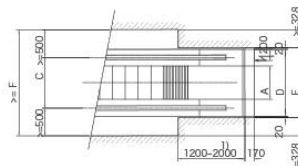
Construction layout drawing of HS200-35M medium height heavy duty escalator



单台布置 SINGLE

并联布置 PARALLEL

C 放大 DETAIL



型号 Type	提升高度 Rise	重量 Weight	电机功率 Power kw	
35-60M 3240 man/hour	H	KN	V=0.5m/s	
	3000	59	5.5	
	3500	62		
	4000	65		
	4500	68		
	5000	70	8	
	5500	73		
	6000	76		
	35-80M 4800 man/hour	3000	60	5.5
		3500	63	
4000		66		
4500		70		
5000		73	8	
5500		76		
6000		79		
35-100M 6000 man/hour		3000	63	5.5
		3500	66	
		4000	70	
	4500	73		
	5000	76	8	
	5500	80		
	6000	83		

尺寸单位为mm, 个别尺寸可能有所修改/mm size units, individual size may be revise

		梯级宽度 Step width		
		1000mm	800mm	600mm
A: 梯级宽度	Step width	1000	800	600
B: 扶手带间宽度	Width between handrails	1157	957	757
C: 扶手带中心距	Handrail center distance	1237	1037	837
D: 扶梯宽度	Width of escalator	1530	1330	1130
E: 井道宽度	Width of shaft	1580	1380	1180
F: 最小间距	Minimum spacing	2236	2036	1836
G: 最大跨距	Maximum outreach	16000	17200	18900
N: 支撑宽度	Width of supporting	1500	1300	1100

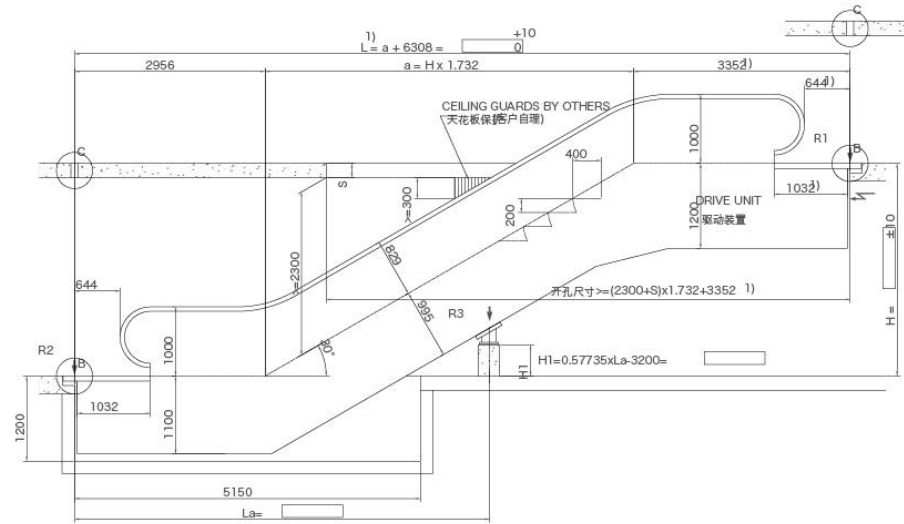
- 若L>G, 需增加中间支撑。
 - 若为双驱动, 梯级宽度为600mm, 上部桁架需增加417mm
 - 详细电机功率参数请咨询技术部
- If L>G, an intermediate support is required, please consult.
 - With a double drive and Step width of 600mm, the truss must be extended by 417mm.
 - Detailed motor power parameters may check with our technical department.

		梯级宽度 Step width		
		1000mm	800mm	600mm
A: 梯级宽度	Step width	1000	800	600
B: 扶手带间宽度	Width between handrails	1157	957	757
C: 扶手带中心距	Handrail center distance	1237	1037	837
D: 扶梯宽度	Width of escalator	1530	1330	1130
E: 井道宽度	Width of shaft	1580	1380	1180
F: 最小间距	Minimum spacing	2236	2036	1836
G: 最大跨距	Maximum outreach	16000	17200	18900
N: 支撑宽度	Width of supporting	1500	1300	1100

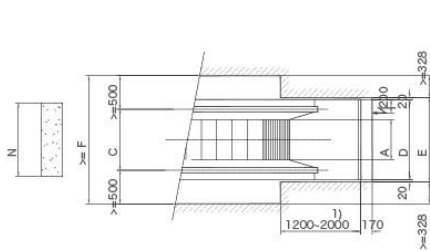
- 若L>G, 需增加中间支撑。
 - 若为双驱动, 梯级宽度为600mm, 上部桁架需增加417mm
 - 详细电机功率参数请咨询技术部
- If L>G, an intermediate support is required, please consult.
 - With a double drive and Step width of 600mm, the truss must be extended by 417mm.
 - Detailed motor power parameters may check with our technical department.

HS200公共交通型不锈钢斜扶手自动扶梯土建图

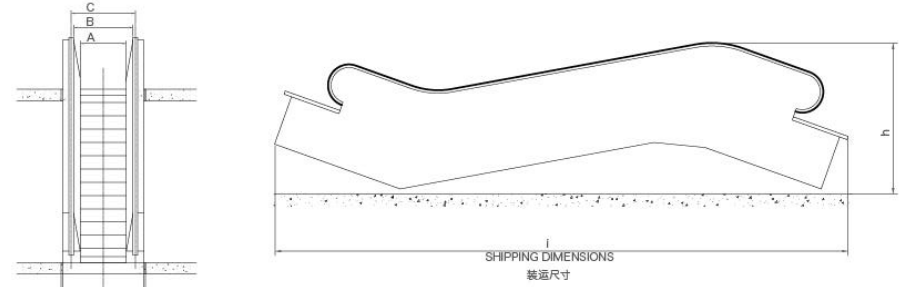
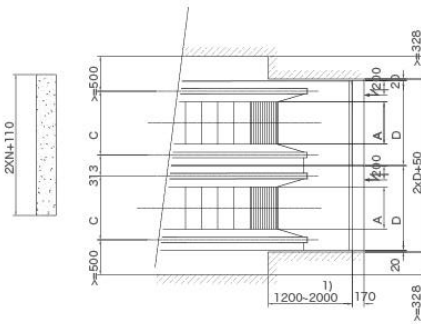
Construction layout drawing of HS200 public heavy duty escalator
(Stainless balustrade is inclined to truss)



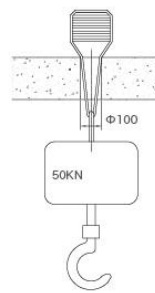
单台布置 SINGLE



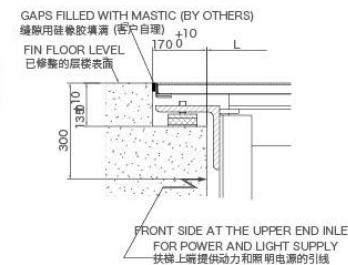
并联布置 PARALLEL



C放大 DETAIL



B放大 DETAIL



梯级宽度

		1000mm	800mm	600mm
A: 梯级宽度	Step width	1000	800	600
B: 扶手带间距	Width between handrails	1157	957	757
C: 扶手带中心距	Handrail center distance	1237	1037	837
D: 扶梯宽度	Width of escalator	1570	1370	1170
E: 井道宽度	Width of shaft	1610	1410	1210
F: 最小间距	Minimum spacing	2226	2036	1836
G: 最大跨距	Maximum outreach	16000	17200	18900
N: 支撑宽度	Width of supporting	1500	1300	1100

- 1.若L>G, 需增加中间支撑。
 - 2.若为双驱动, 梯级宽度为600mm, 上部桁架需增加417mm
 - 3.详细电机功率参数请咨询技术部
- 1.If L>G, an intermediate support is required, please consult.
2.With a double drive and Step width of 600mm, the truss must be extended by 417mm.
3.Detailed motor power parameters may check with our technical department.

型号 Type	提升高度 H	重量 KN	电机功率 V=0.5m/s	型号 Type	提升高度 H	重量 KN	电机功率 V=0.5m/s	型号 Type	提升高度 H	重量 KN	电机功率 V=0.5m/s
30-80M 3240man/hour	3000	77	5.5	30-80M 4800man/hour	3000	78	5.5	30-100M 6000man/hour	3000	81	8
	3500	80			3500	82			3500	85	
	4000	84			4000	86			4000	89	
	4500	87			4500	90			4500	93	
	5000	91			5000	93			5000	97	
	5500	94			5500	97			5500	101	
	6000	98	6000		101	6000	106		11		
	6500	101	6500		105	6500	110				
	7000	105	7000		108	7000	114				
	7500	108	7500		112	7500	118				
	8000	112	8000		116	8000	121				
	8500	115	8500		120	8500	135				
	9000	118	9000		123	9000	139		2 x 11		
	9500	122	9500		127	9500	143				
	10000	125	10000		131	10000	147				
	11000	132	11000		148	11000	155				
	12000	139	12000		155	12000	163				
	13000	146	13000		163	13000	171				
14000	153	14000	170	14000	180	2 x 15					
15000	168	15000	178	15000	188						
16000	175	16000	186	16000	196						
17000	182	17000	193	17000	204						
18000	189	18000	201	18000	212						

尺寸单位为mm, 个别尺寸可能有所修改/mm size units, individual size may be revise

以客为尊 服务至上

Customer esteemed, service supreme



全面 细致 优秀

汉森组建了专业的售后服务团队，
整个服务团队，有着解决售后服务问题和制定解决方案的深厚经验。
汉森的服务工程师都经过专业化、规范化的严格培训且考核合格后才能上岗。

Hanson organizes professional after-sale service team,
overall service team has profound experience to solve after-sale service problems and formulate solutions.
The service engineers in Hanson should be taken professional, strict and standard train, and pass the examination before assignment.



- 汉森在国内各主要城市均设有分支机构，将为当地的客户提供快捷的服务，包括备件的供应以及响应时间。
- 汉森为紧急排除故障而特设的24小时客户热线，将在第一时间为您提供服务。
- 汉森定期派员对您的设备的运行状态进行检测，将使您的设备得到最为专业的保养。



- Hanson establishes the brand institutes in various major cities in China, it will furnish the local clients with the prompt service, including the spare supply and the responsive time.
- Hanson sets 24-hours customer hotline in order to urgently remove the trouble, it will always promptly furnish you with the best service.
- Hanson regularly assigns the staff to test you escalator 's running conditions so that you escalator can get the most professional maintenance.

专心 Attentive

对顾客购买的产品做到心中有数
The customers can be rest assured in buying our products.

贴心 Considerate

集约控制，准确把握
Intensive control, accurate grasp.

安心 Trustworthy

坚持实施和扩大服务网络
We persist in executing and expanding the service networks.

